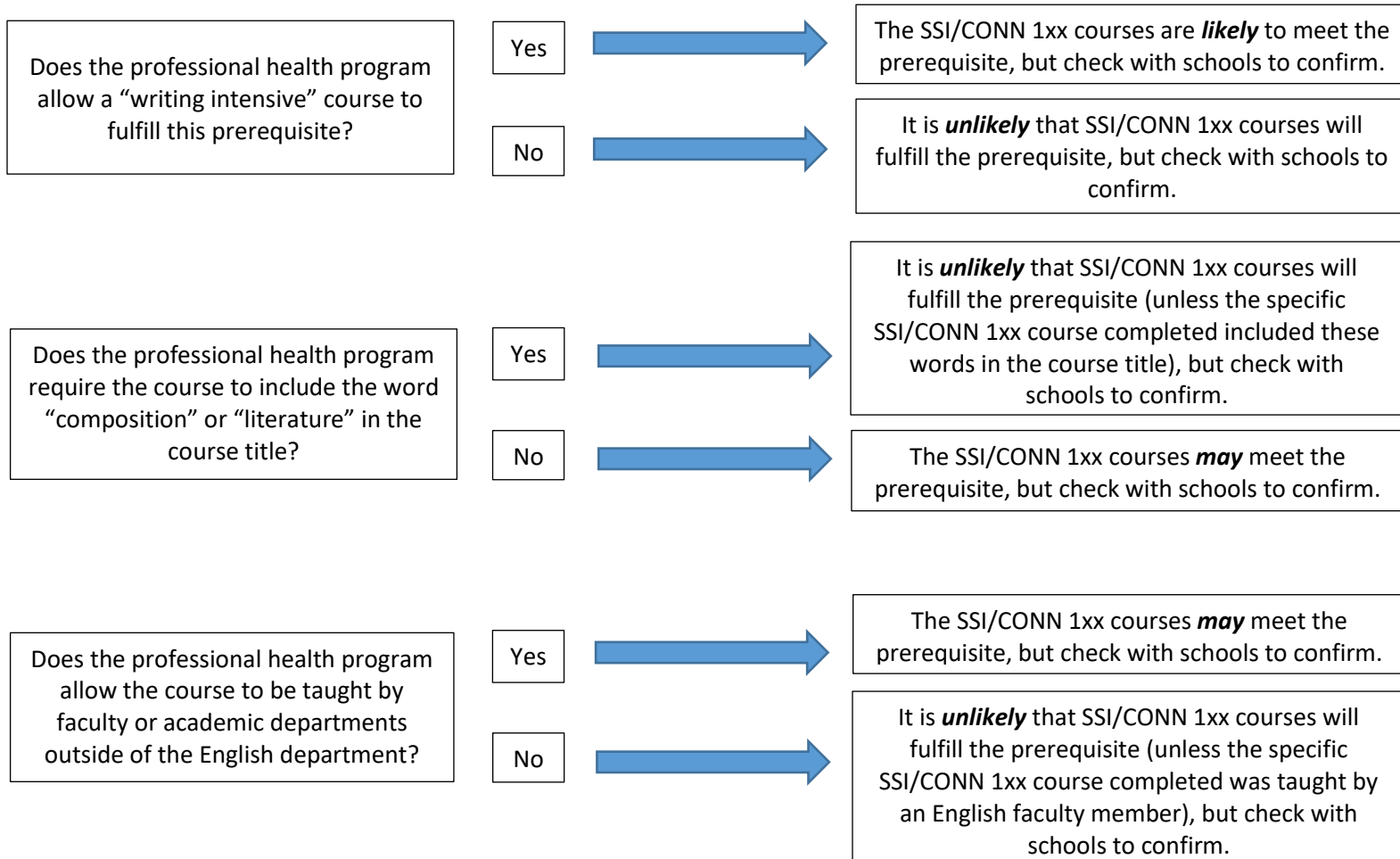




English Course Prerequisite & SSI/CONN 1xx Courses

Revised: 7/8/2024

Many professional health programs require one or more English/Composition prerequisite courses. Applicants often ask if their SSI or CONN 1xx course(s) will fulfill this type of requirement. The following information may help in interpreting English/Composition prerequisites as they relate to SSI/CONN 1xx courses completed at the University of Puget Sound.



***Important Note:** Applicants **should not** rely on this information to confirm prerequisites for any professional health programs. Applicants are advised to confirm prerequisites directly with each program to which they are applying.