

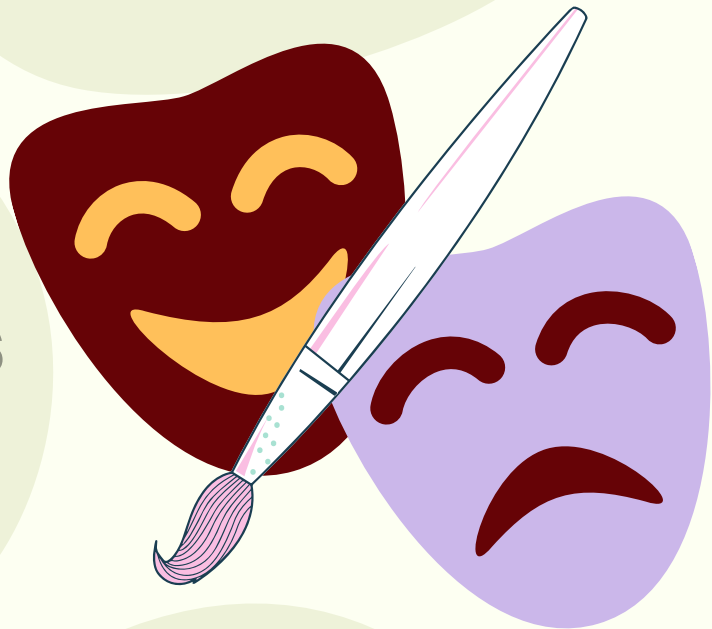
# 5 ways to a Neuroscience Major

**NeuroPhilosophy**



**NeuroEconomics**

**NeuroArts**



**NeuroSpirituality**

**NeuroBioethics**





# NEUROSCIENCE MAJOR STRUCTURE

Neuroscience is a Secondary Major with 8 units. It is NOT a standalone major. You have to declare a primary major



**1**

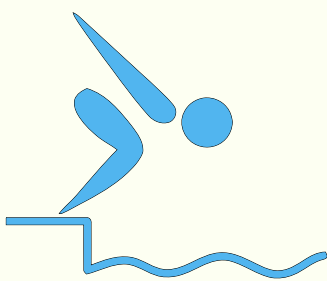
## INTRO COURSES

(3 units)

BIO 101/111 Intro to Biology

PSYCH 101 Intro to Psychology

NRSC 201 Intro to Neuroscience



**2**

## INTRO TO CONCENTRATION

(1 unit)

Required course that introduces you to the field of Philosophy, Economics, Arts, Religion or Bioethics



**3**

## TWO ELECTIVES IN CONCENTRATION

(2 units)

Deepen your knowledge with electives within Philosophy, Economics, Arts, Religion or Bioethics



**4**

## ONE ELECTIVE OUTSIDE CONCENTRATION

(1 unit)

Broaden your horizons with an elective outside the main concentration



**5**

## SENIOR SEMINAR

(1 unit)

Synthesize your knowledge by bringing it together with the Senior Seminar in Neuroscience



**6**

## RESEARCH/INTERNSHIP

Gain practical experience and skills applying your knowledge through research, internships, study abroad, productions or performances

### Notes:

- 1.No more than one elective course may be used to fulfill the student's primary major and the Neuroscience secondary major.
- 2.Except for the restriction in Note 1 above, courses that satisfy Neuroscience major requirements may also apply to core, minor, and other major requirements.
- 3.Selection of elective courses should be made in consultation with a neuroscience advisor.
- 4.Course credit earned from an internship or research experience does not count toward the required eight units of coursework outlined above. However students can count internships towards both their primary major and Neuroscience, with approval from the director.



# NEUROPHILOSOPHY



1

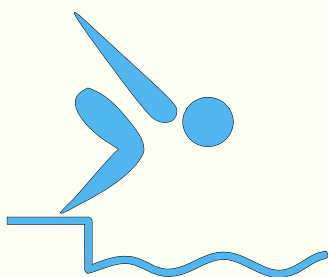
## INTRO COURSES

(3 units)

BIO 101/111 Intro to Biology

PSYCH 101 Intro to Psychology

NRSC 201 Foundations in Neuroscience

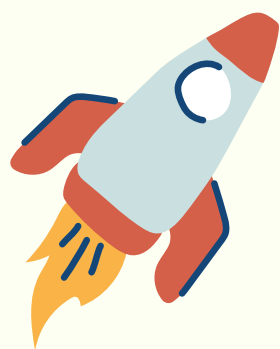


2

## INTRO TO CONCENTRATION

(1 unit)

PHIL 230 Philosophy of the Mind

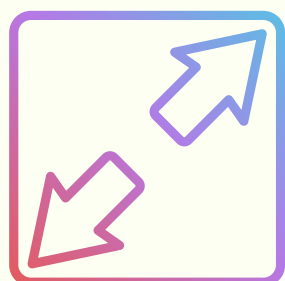


3

## TWO COURSES IN CONCENTRATION

(2 units)

PHIL 340 Philosophy of Cognitive Science & one elective from PHIL 102, PHIL 105, PHIL 250, PHIL 286, PHIL 333, PHIL 336, PHIL 350



4

## ONE ELECTIVE OUTSIDE CONCENTRATION

(1 unit)

BIOL 212, BIOL 361, BIOL 434, BIOL 472, CONN 354, CONN 357, CONN 393, CSCI 431, CONN 481, ECON 365, ECON 291, EXSC 221, EXSC 222, EXSC 328, EXSC 424, NRSC 350, PSYC 230, PSYC 310, PSYC 313, PSYC 335, PSYC 351, PSYC 373, REL 301, REL 336, REL 340, REL 450, STS 318, STS 333



5

## SENIOR SEMINAR

(1 unit)

NRSC 450 Senior Seminar in Neuroscience



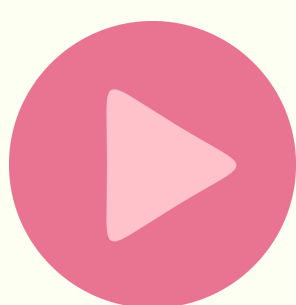
6

## RESEARCH/INTERNSHIP

Gain practical experience and skills applying your knowledge through research, internships, study abroad, productions or performances



# NEUROECONOMICS



1

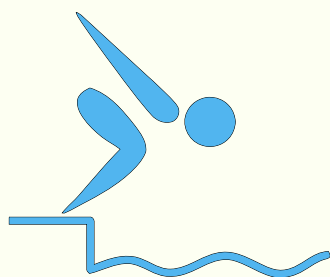
## INTRO COURSES

(3 units)

BIO 101/111 Intro to Biology

PSYCH 101 Intro to Psychology

NRSC 201 Foundations in Neuroscience

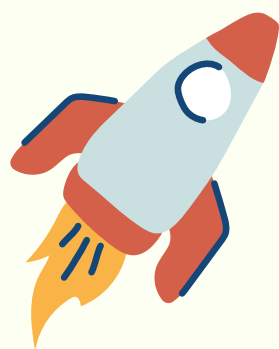


2

## INTRO TO CONCENTRATION

(1 unit)

ECON 102 Introduction to Behavior  
and Choice

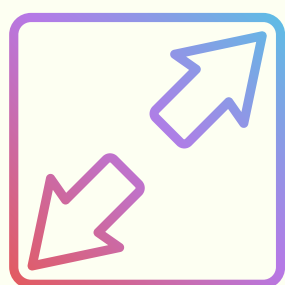


3

## TWO ELECTIVES IN CONCENTRATION

(2 units)

ECON 291, ECON 380, ECON 365,  
ECON 341, CONN 481



4

## ONE ELECTIVE OUTSIDE CONCENTRATION

(1 unit)

BIOE 292, BIOL 212, BIOL 361, BIOL 434, BIOL 472,  
CONN 354, CONN 357, CONN 393, CONN 481, CSCI  
431, EXSC 221, EXSC 222, EXSC 328, EXSC 424, NRSC  
350, PHIL 102?, PHIL 105, PHIL 230, PHIL 250, PHIL  
286, PHIL 292, PHIL 333, PHIL 336, PHIL 350, PSYC  
230 PSYC 310, PSYC 313, PSYC 335, PSYC 351, PSYC  
373, REL 292, REL 301, REL 336, REL 340, REL 450,  
STS 318, STS 333



5

## SENIOR SEMINAR

(1 unit)

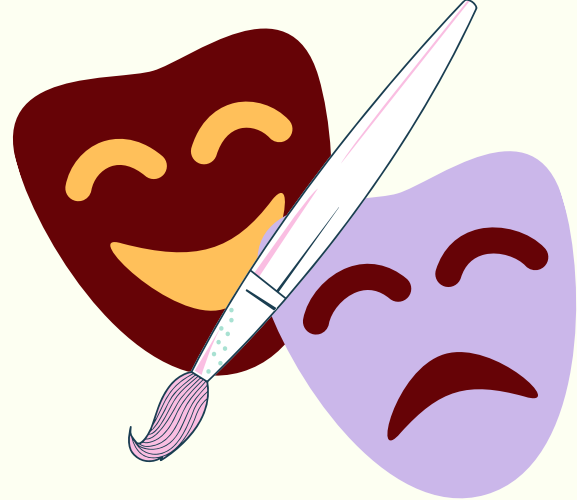
NRSC 450 Senior Seminar in Neuroscience



6

## RESEARCH/INTERNSHIP

Gain practical experience and skills  
applying your knowledge through  
research, internships, study abroad,  
productions or performances



# NEUROARTS



1

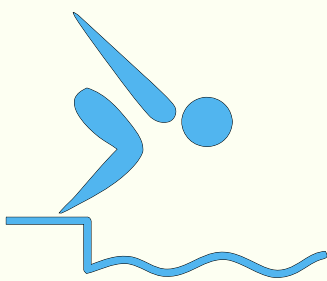
## INTRO COURSES

(3 units)

BIO 101/111 Intro to Biology

PSYCH 101 Intro to Psychology

NRSC 201 Foundations in Neuroscience



2

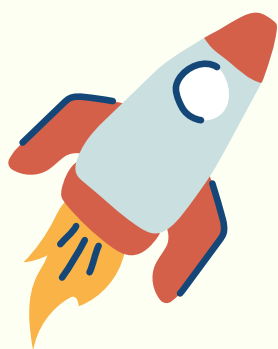
## INTRO TO CONCENTRATION

(1 unit)

THTR 200 Theatrical Experience or

ARTS 101 or ARTS 103 Drawing

Through Painting or Printmaking

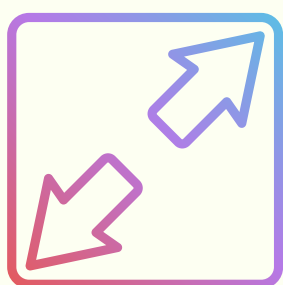


3

## TWO ELECTIVES IN CONCENTRATION

(2 units)

ARTS 251, THTR 217, THTR 215, THTR 300,  
THTR 313



4

## ONE ELECTIVE OUTSIDE CONCENTRATION

(1 unit)

BIOE 292, BIOL 212, BIOL 361, BIOL 434, BIOL 472,  
CONN 354, CONN 357, CONN 393, CONN 481, CSCI  
431, ECON 365, ECON 291, EXSC 221, EXSC 222, EXSC  
328, EXSC 424, NRSC 350, PHIL 102?, PHIL 105, PHIL  
230, PHIL 250, PHIL 286, PHIL 292, PHIL 333, PHIL  
336, PHIL 350, PSYC 230 PSYC 310, PSYC 313, PSYC  
335, PSYC 351, PSYC 373, REL 292, REL 301, REL 336,  
REL 340, REL 450, STS 318, STS 333



5

## SENIOR SEMINAR

(1 unit)

NRSC 450 Senior Seminar in Neuroscience



6

## RESEARCH/INTERNSHIP

Gain practical experience and skills  
applying your knowledge through  
research, internships, study abroad,  
productions or performances



# NEUROSPIRITUALITY



1

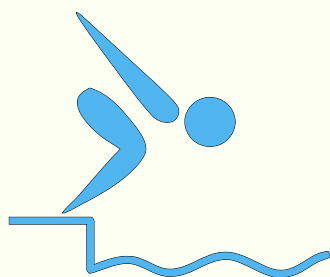
## INTRO COURSES

(3 units)

BIO 101/111 Intro to Biology

PSYCH 101 Intro to Psychology

NRSC 201 Foundations in Neuroscience

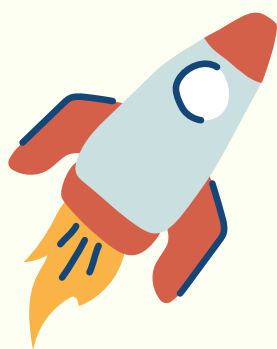


2

## INTRO TO CONCENTRATION

(1 unit)

REL 208 Yoga, Psychedelics and Mind Science

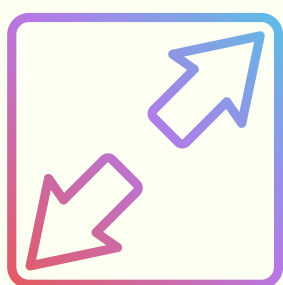


3

## TWO ELECTIVES IN CONCENTRATION

(2 units)

REL/BIOE 292, REL 301, REL 350, REL 300, REL 325, REL 332, REL 336, REL 340, REL 342, REL 344, REL 450, REL 460



4

## ONE ELECTIVE OUTSIDE CONCENTRATION

(1 unit)

BIOL 212, BIOL 361, BIOL 434, BIOL 472, CONN 354, CONN 357, CONN 393, CONN 481, CSCI 431, ECON 365, ECON 291, EXSC 221, EXSC 222, EXSC 328, EXSC 424, NRSC 350, PHIL 102, PHIL 105, PHIL 230, PHIL 250, PHIL 286, PHIL 333, PHIL 336, PHIL 350, PSYC 230 PSYC 310, PSYC 313, PSYC 335, PSYC 351, PSYC 373, STS 318, STS 333



5

## SENIOR SEMINAR

(1 unit)

NRSC 450 Senior Seminar in Neuroscience



6

## RESEARCH/INTERNSHIP

Gain practical experience and skills applying your knowledge through research, internships, study abroad, productions or performances



# NEUROBIOETHICS



1

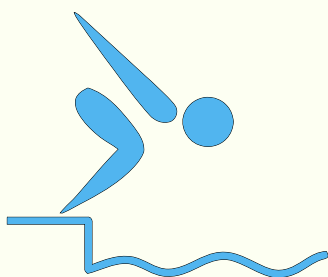
## INTRO COURSES

(3 units)

BIO 101/111 Intro to Biology

PSYCH 101 Intro to Psychology

NRSC 201 Foundations in Neuroscience



2

## INTRO TO CONCENTRATION

(1 unit)

BIOE/REL/PHIL 292 Basics of Bioethics

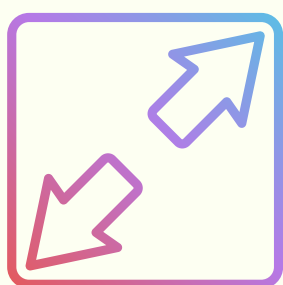


3

## TWO ELECTIVES IN CONCENTRATION

(2 units)

BIOE 255, BIOE/REL 272, BIOE 350, REL 298, SOAN 360, PHIL 105, PHIL 230



4

## ONE ELECTIVE OUTSIDE CONCENTRATION

(1 unit)

BIOL 212, BIOL 361, BIOL 434, BIOL 472, CONN 354, CONN 357, CONN 393, CONN 481, CSCI 431, ECON 365, ECON 291, EXSC 221, EXSC 222, EXSC 328, EXSC 424, NRSC 350, PHIL 102, PHIL 250, PHIL 286, PHIL 292, PHIL 333, PHIL 336, PHIL 350, PSYC 230, PSYC 310, PSYC 313, PSYC 335, PSYC 351, PSYC 373, REL 301, REL 450, REL 336, REL 340, STS 318, STS 333



5

## SENIOR SEMINAR

(1 unit)

NRSC 450 Senior Seminar in Neuroscience



6

## RESEARCH/INTERNSHIP

Gain practical experience and skills applying your knowledge through research, internships, study abroad, productions or performances



# NEUROSCIENCE MINOR

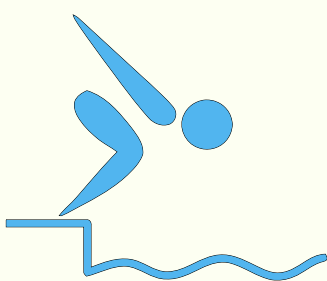


1

## INTRO COURSES

(1 units)

NRSC 201 Foundations in Neuroscience



2

## THREE ELECTIVES

(3 units)

BIOL 212, BIOL 361, BIOL 434, BIOL 472, CONN 354, CONN 357, CONN 393, CONN 481, CSCI 431, ECON 365, ECON 291, EXSC 221, EXSC 222, EXSC 328, EXSC 424, NRSC 350, PHIL 102, PHIL 250, PHIL 286, PHIL 333, PHIL 336, PHIL 350, PSYC 230, PSYC 310, PSYC 313, PSYC 335, PSYC 351, PSYC 373, REL 292, REL 301, REL 450, REL 336, REL 340, STS 318, STS 333.



3

## SENIOR SEMINAR

(1 unit)

NRSC 450 Senior Seminar in Neuroscience



4

## RESEARCH/INTERNSHIP

Gain practical experience and skills applying your knowledge through research, internships, study abroad, productions or performances



### Notes

- 1.No more than one course can be taken to fulfill requirements of a student's first major will count towards the Neuroscience minor requirements.
- 2.Courses that satisfy Neuroscience minor requirements may apply to core, second major, and other minor requirements.
- 3.Internship/research may be taken for credit through the Neuroscience Internship Program or the student's major department.