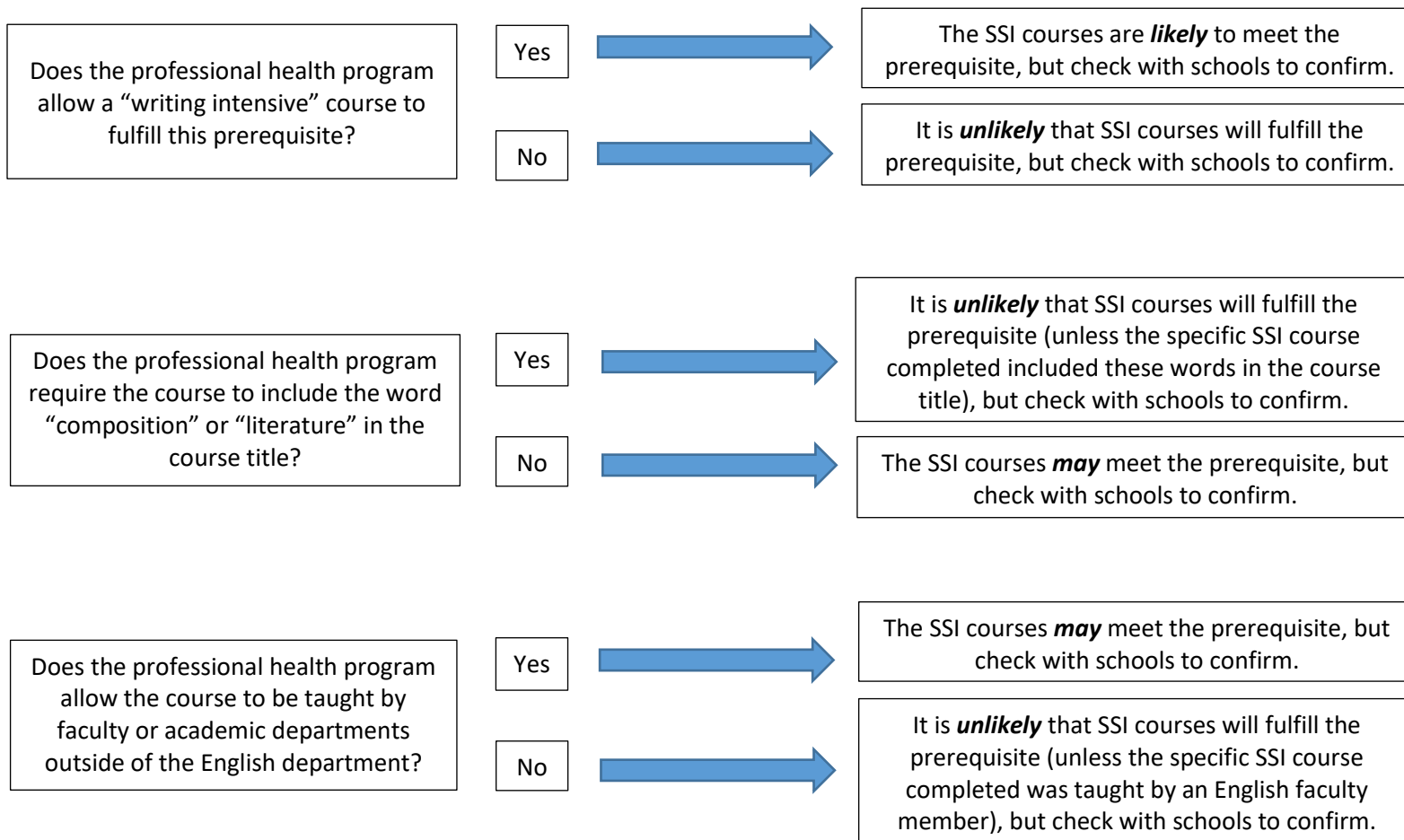




English Course Prerequisite & SSI Courses

Revised: 8/18/2023

Many professional health programs require one or more English/Composition prerequisite courses. Applicants often ask if their SSI course(s) will fulfill this type of requirement. The following information may help in interpreting English/Composition prerequisites as they relate to SSI courses completed at the University of Puget Sound.



***Important Note:** Applicants **should not** rely on this information to confirm prerequisites for any professional health programs. Applicants are advised to confirm prerequisites directly with each program to which they are applying.