

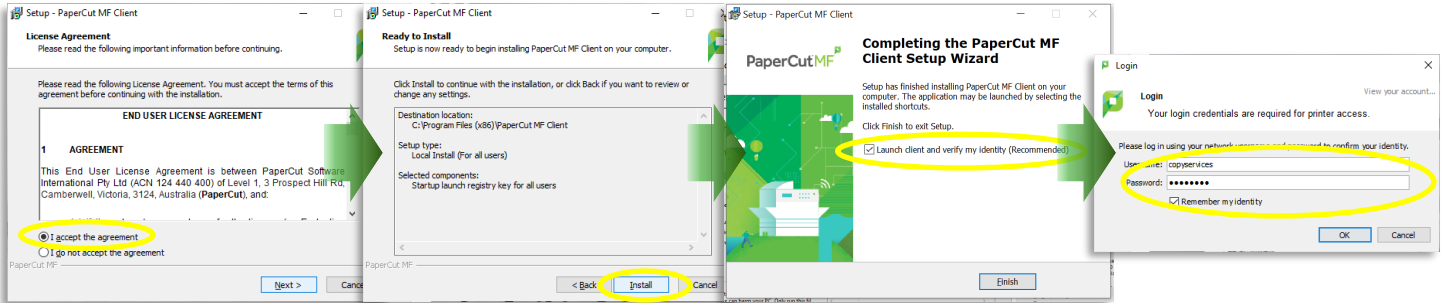
# Connect Your PC to the Konica Copiers

There are three steps to installing Konica Printers on your computer.

## 1. Click this link: <\\printers\PCClient\win\client-local-install>

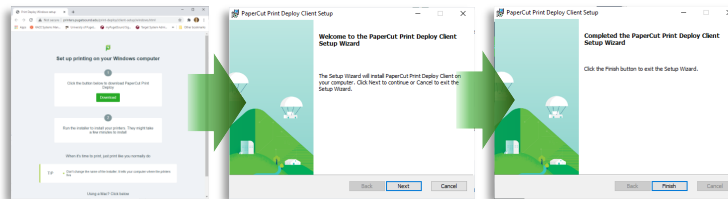
If the installation does not begin automatically, type the link address in the search bar in the lower left corner of your computer and hit Enter.

- Complete the installation, checking the box to **Launch client and verify identity**.
- Then enter your Puget Sound login, checking the **Remember my identity** box.



## 2. Click this link: <http://printers.pugetsound.edu/print-deploy/client-setup/windows.html>

- Click **Download**.
- Go to the downloaded file and double-click to run and complete the installation.
- The **PCS-Release** printer will be installed automatically, and will appear as a choice when you hit Print. To use it, select it as your printer, choose any options like double-sided, color, hole-punching, or stapling, and print as normal. Then go to any Konica copier on campus, log in with your **Copier ID** (or your Puget Sound login), and release the print.



## 3. Choose any additional printers to install

To print directly to your local Konica copier without having to log in and release the print in person, you can add your local printer from the list of options. You can add or delete from your list of printers at any time.

- In the lower right corner of your computer, you will see the Print Deployment icon. Right click and choose **View My Printers**. This will show the list of installed Konica printers on your computer.
- Select **Add Printers** from the navigation bar on the left. This will show a list of all available Konica printers.
- Find the printers that you would like to be able to print directly to and click **Install**.
- Print as normal, selecting the printer you would like to print directly to in the drop down list.

