

THE SHEET WITH ALL THE FACTS

(OFTEN SEPARATED BY BULLETS)

→ Location

- Tacoma, Wash., population 200,000
- 35 miles south of Seattle
- Located in the residential North End neighborhood, near shopping, downtown, and waterfront
- 97-acre campus
- Within two hours of two ski areas, two national parks, and multiple wilderness areas

Students

- 2,600 students; 60% women and 40% men from 46 states, 8 countries; 74% from outside Washington state
- Undergraduates by Race/Ethnicity*
 - African American/Black 3%
 - Asian/Asian American 14%
 - Caucasian 87%
 - Hispanic/Latino 8%
 - Native American 2%
 - Pacific Islander 2%

*Pondering why these add up to more than 100%? It's because we value diversity and want to show that many of our students identify as one or more races or ethnicities.

Faculty

- 100% of tenure-line faculty hold doctorate or equivalent
- Full-time undergraduate faculty: 90%
- Student-faculty ratio: 11 to 1
- ★ Seven Carnegie Foundation Washington Professor of the Year award winners—more than any other college or university

Curriculum

- Four-year core curriculum
- More than 50 traditional and interdisciplinary programs
- 1,200 courses offered annually

Study Abroad

- More than 100 study abroad programs in 55 countries
- Some students study abroad for nine months through the PacRim experience

Athletics and Recreation

- NCAA Division III Northwest Conference
- 23 NCAA Division III teams
- Numerous intramural and club sports, including rugby, ultimate, and ski team
- 50% of students participate in intramural sports
- New Athletics and Aquatics Center with 25-yard pool and 12,500-square-foot fitness center

Student Life

- More than 100 wide-ranging organizations and clubs
- Greek-letter organizations
- Nearly 70% of students live on campus
- Two-year residency requirement
- More than 140 performances/events in the School of Music every year

Scholarships and Financial Aid

- Approximately 90% of students receive need-based financial aid and merit scholarships
- Puget Sound offers renewable academic merit scholarships that range from \$8,000 to \$22,000
- Talent scholarships available in music, theater, art, and debate
- All incoming first-year students are invited to apply for the prestigious Matelich and Lillis scholarships, which cover full tuition, room, and board at Puget Sound for all four years

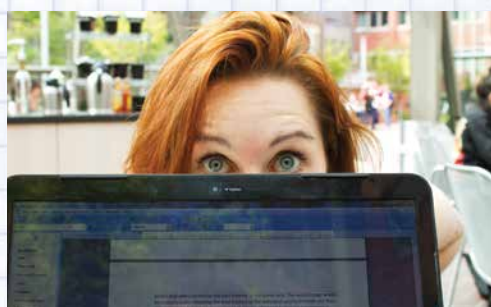
Puget Sound "In the Know" Facts

- More than 500,000 volumes in the library
- *Forbes* magazine named Puget Sound one of America's top 20 entrepreneurial colleges
- Puget Sound's mascot is "Grizz" the Logger
- *The Princeton Review* has ranked Puget Sound in the top 20 for "Most Accessible Professors" and "Best Science Facilities"
- Average class size: 18
- Puget Sound is one of only 40 schools in the nation included in *Colleges That Change Lives*

CLASS OF 2020 DETAILS

First-Year Admission Profile

- Total entering first-year students: 674
- Middle 50% SAT: 1210–1390
- Middle 50% ACT: 26–30
- 60% female, 40% male
- Average high school GPA: 3.55
- Geographic distribution
 - California 33%
 - Washington 19%
 - Oregon 11%
 - Colorado 9%
 - Midwest 8%
 - The South (east and west) 4%
 - New England & Mid-Atlantic 4%
 - Hawai'i 4%
 - Other wonderful places in the U.S. and around the globe 8%



YES, EVEN MORE LISTS OF FACTS!

Areas of Study

African American Studies
Anthropology
Art and Art History
Asian Languages and Cultures
(Chinese, East-Asian
Languages, Japanese)
Asian Studies
Biochemistry
Bioethics
Biology
Business (Business Leadership,
International Business)
Chemistry
Classics (Greek, Latin)
Communication Studies
Computer Science
Economics
Education Studies
Engineering, Dual-degree
English
Environmental Policy and
Decision Making
Exercise Science
French Studies
Gender and Queer Studies
Geology
German Studies

Global Development Studies
Health Professions (Pre-med,
Pre-dental, Pre-veterinary)
Hispanic Studies
History
Honors Program
Humanities Program
International Political Economy
Latin American Studies
Latina/o Studies
Mathematics
Molecular and Cellular Biology
Music (Music Business,
Music Education,
Music Performance)
Natural Science
Neuroscience
Occupational Therapy
Philosophy
Physical Therapy
Physics
Politics and Government
Pre-law
Psychology
Religious Studies
Science, Technology, and Society
Sociology
Special Interdisciplinary Major
Study Abroad
Theatre Arts

A few places our graduates have gone on to work

Allen Institute for Brain Science
Amazon
AmeriCorps
Apple
Boeing
Brooks Running
Centers for Disease Control
Coca-Cola
Hitachi Consulting
Intel
Microsoft
Netflix
Nike
NPR
Peace Corps
PopCap Games
Salesforce
Starbucks
SurveyMonkey
Tableau Software
U.S. House of Representatives

Some graduate school placements

Boston College
Columbia University
Cornell University
Dartmouth College
Georgetown University
Harvard University
Johns Hopkins University
New York University
Oregon Health &
Science University
Stanford University
Tufts University
University of California,
Los Angeles
The University of Chicago
University of Michigan
University of Oxford
University of Southern California
University of Washington
Washington University in St. Louis
Yale University



More awesome stuff about Puget Sound and our graduates

In the top 5% of colleges for students who go on to earn doctorate degrees

High acceptance rates to prestigious medical and law schools

Consistently a leading producer of postgraduate fellows, including Watson and Fulbright awards

Ranked No. 1 among small colleges for graduates serving in the Peace Corps

Cost of Attendance (2016–17)

Tuition: \$46,310

Room and Board: \$11,800

Student Government Fee: \$242

Total: \$58,352

* Application Deadlines

Early Decision 1 November 15

Early Action December 1

Early Decision 2 January 1

Regular Decision January 15

For more information, visit pugetsound.edu/admission

"THE UNIVERSITY OF PUGET SOUND is a bright spot on the map of American higher education. Students searching for thoughtful professors, a lively interdisciplinary vibe, friendly classmates, and a beautiful setting ought to add the university to their short lists." — *Colleges That Change Lives*

